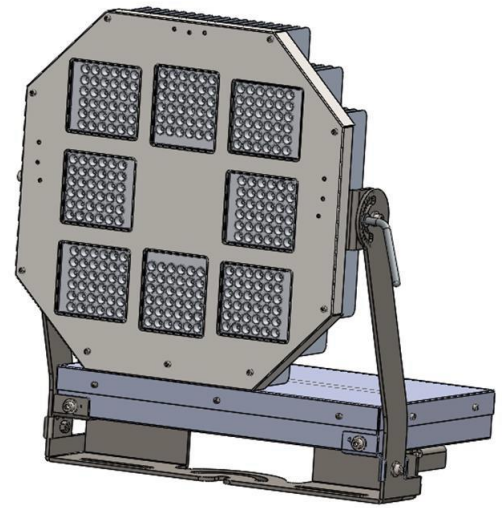


HS Series for Stadium and Area Lighting

Applications:

The GreenStar HS Series of Stadium Lights is the solution for competitive sports venue lighting and area lighting as well. The rugged, corrosion-resistant, housing is outfitted with stainless steel hardware and an epoxy coating that offers a very long service life and weather resistance.



Features:

Construction—The HS series is designed with rugged, corrosion-resistant, die cast aluminum housing with stainless steel hardware for durability and strength. An epoxy powder-coated finish provides excellent resistance to outdoor conditions.

LED's—The HS incorporates advanced high efficiency LED's providing optimized combinations of light delivery to uniformly illuminate target areas.

Electrical—Available in 120-277V at 50/60Hz. Power Factor of >95%. Total Harmonic Distortion (THD) is <10%. Exceeding Energy Star requirements, the HS conforms to industry, and government performance mandates and standards. Efficacy of 125+ lumens per watt enables the HS to properly manage heat dissipation while enhancing performance and longevity.

Optics— Precision molded optics available in Flood Light NEMA Type III (narrow beam), Type IV N (medium beam), Type IV M (wide beam) and Type VI (Extra Wide)

LED Rated Life (L75) - These high quality LED's are rated for approximately 100,000 hours @ 25°C (77°F) ambient environment per LM-80, TM21.

Protection/Ingress—Optics area, PSU and Surge Arrester are IP66 rated. PSU Enclosure is IP54 rated.

Secondary Surge Protection—20kV/10kA (ANSI/IEEE C64.41.2) is standard and replaceable.

Listing— BIS, LM79, LM80, NEMA, IESNA, 3 G Vibration compliant.

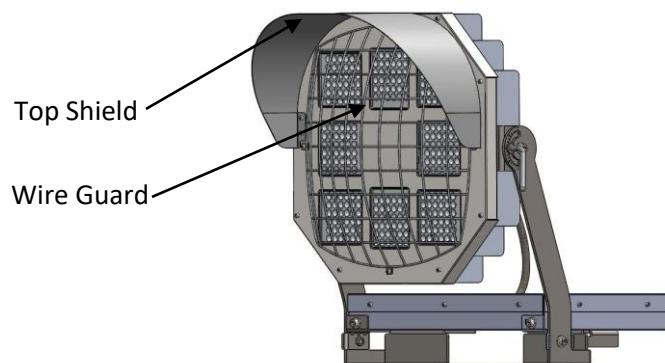
Ordering Table:

Example: HS350331S

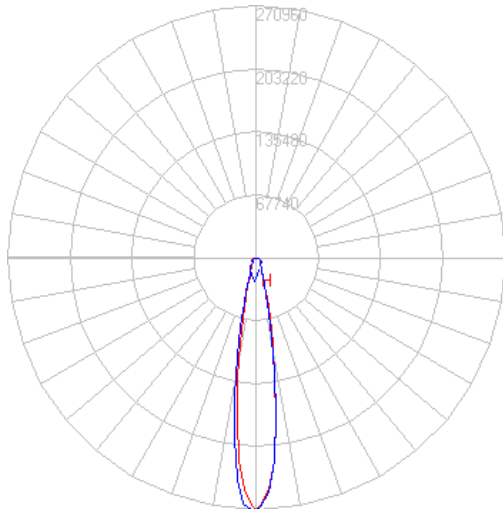
Model	Wattage	CCT	Distribution	Voltage	Color
HS	350 460 620	3 = 3000K 4 = 4000K 5 = 5000K 6 = 5700K	3 = Narrow 4 N= Med. Narrow 4 M= Medium Wide 6 = Extra Wide	1 = 120-277V 4 = 347-480V	S= Silver

Accessories:

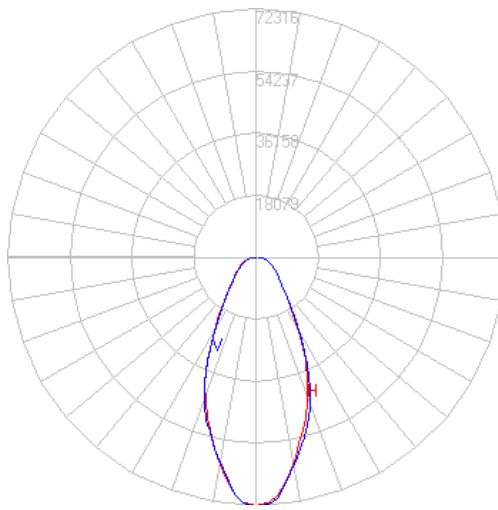
- Top Shield
- Full Shield
- Wire Guard



Photometric:

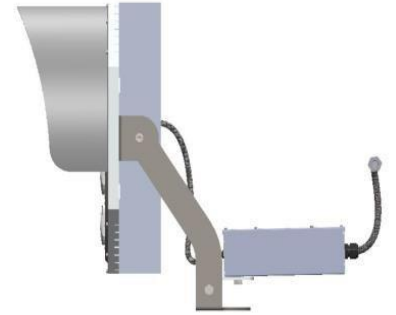
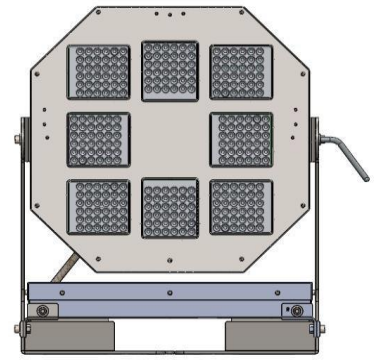


HST620_NMEA 3



HS620_NEMA 6

Weights and Dimensions:



Weight: 27.5 Kg.

Performance Summary:

Model	Input Watts	Distribution Type	4000-5700 K	
			Lumens	Efficacy
HS350	350	NEMA 3	43750	>125
HS460	460	NEMA 4 Narrow NEMA 4 Medium	57500	>125
HS620	620	NEMA 6	77500	>125

*** All Specifications Are Subject To Change without Notice ***

Mounting:

- Adjustable Mounting Bracket
- Accepts standard 3/4" bolts

Warranty:

5 year warranty

