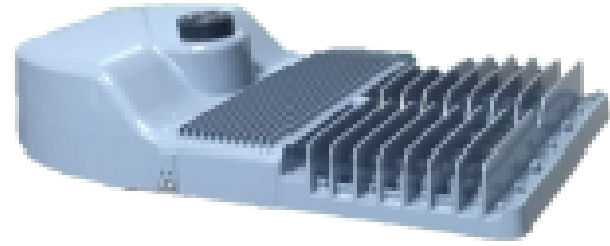


OR Series Roadway LED Luminaires



The OR LED Luminaire is GreenStar’s third generation utility grade Luminaire. Designed to perform in the demanding Roadway and municipal Lighting projects. It is ideal for both retrofit and new construction and has a sleek, modern, architecturally pleasing design. The design allows for the inclusion of smart city sensors and cameras while providing the highest level of performance for long pole to pole distances found in the transportation sector. This innovative design produces light output equivalent to a 150W—400W HID and provides energy savings of 65% or greater.

FEATURES:

Construction—The OR series is designed with rugged, corrosion-resistant, die cast aluminum housing with stainless steel hardware for durability and strength. An epoxy powder-coated finish provides excellent resistance to outdoor conditions.

LED’s—The OR incorporates advanced high-efficiency chip LED available in 4000K-5700K CCT (>70CRI) components providing optimized combinations of light delivery to uniformly illuminate target areas with discrete optics.

Electrical—Available in 100-277V at 50/60Hz. Power Factor of >95%. Total Harmonic Distortion (THD) is <10% (rated 277V). Efficacy of 115+ lumens per watt enables the OR to properly manage heat dissipation even at 50°C while enhancing performance and longevity.

Optics—Precision-molded optics available in Type II, III, IV, and V distribution patterns. Cutting edge photometric design achieves full cut-off with zero light above the horizontal plane/axis. Field installable additional shielding is also available to customize specific applications.

LED Rated Life (L70) - These high quality LED’s are rated for approx. 100,000 hours @ 25°C (77°F) ambient environment per LM-80, TM21.

Protection/Ingress—LED compartment is IP66 rated. PSU and Surge Arrester compartment is IP54 rated. IP67 rated LED driver used.

Photocontrol Options—3 pin NEMA receptacle is standard in accordance with most DOT requirements, a 7 pin receptacle is also at no additional cost.

Surge Protection—Industry leading thermally protected 10kV/5kA (ANSI/IEEE C64.41.2) is standard and replaceable.

Vibration Endurance—The OR meets the ANSI C136.31, American National Standard for Roadway Luminaire Vibration specifications for bridge/overpass applications (tested for 3G over 100,000 cycles by independent lab) and design validated to achieve 5G compliance.

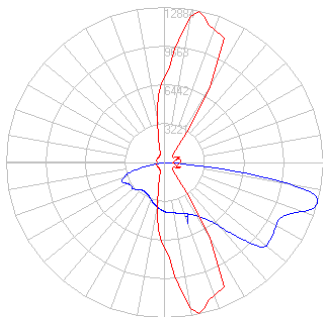
Listings—ETL, LM79, LM80, NEMA, IESNA, ASTM B117. NOM design conformance.

ORDERING TABLE:

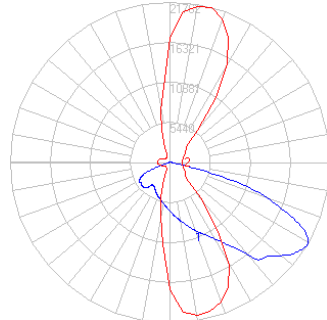
Example:OR250431SN

Model	Wattage	CCT	Distribution	Voltage (Vac)	Color	Control Option
OR250 OR300	250 300	4000- 5700K	IESNA Type II IESNA Type III IESNA Type IV IESNA Type V	1=120-277	S=Silver	C=No Photocell Receptacle N=3-PIN NEMA Receptacle

POLAR DIAGRAM:

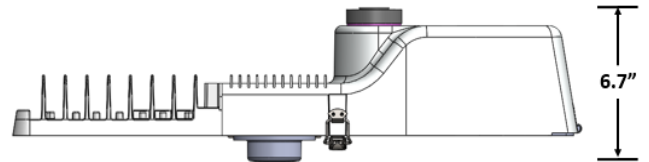
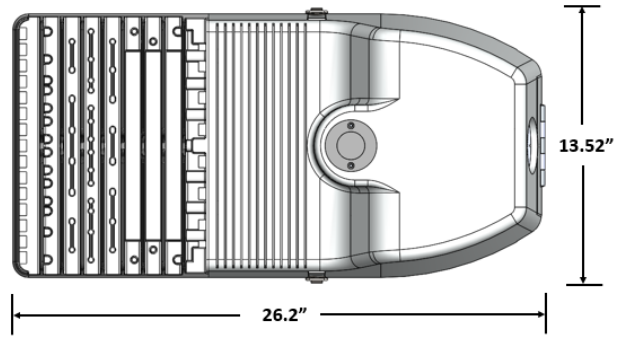


OR300431SC



OR200421S

WEIGHTS/DIMENSION:



Weight: 12.4Kg.

PERFORMANCE SUMMARY:

Model	Input Watts	Input Current (A)			Distribution Type	4000K-5700K	
		120V	240V	277V		Lumens	Efficacy (LPW)
OR250	250	2.13	1.09	0.95	II	30,000	≥120
					III		
					IV		
					V		
OR300	300	2.55	1.30	1.14	II	36,000	≥120
					III		
					IV		
					V		

MOUNTING:

Four bolt/two bracket flush mounting with built-in tenon stop and step levels accepting horizontal arms up to 2.5" OD. Bubble level available for simple leveling at time of installation. Inclinometer available for DOT applications.

ACCESSORIES:

- DOT Inclinometer—CAT# GSPL62M
- Side Tenon Arm—CAT# GSSM126M

WARRANTY:

5 Year Standard Warranty

